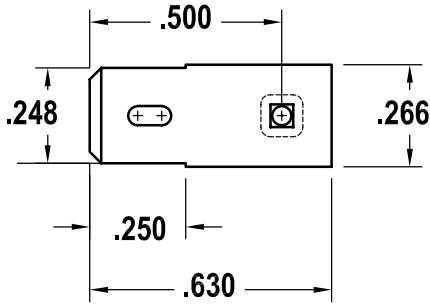
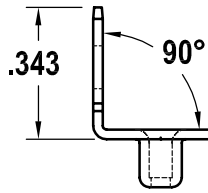


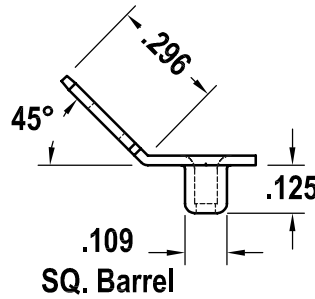
OPTION 1
Flat



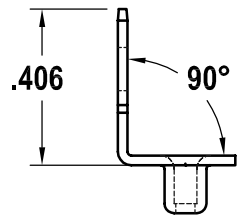
OPTION 3
90° - short



OPTION 5
45°

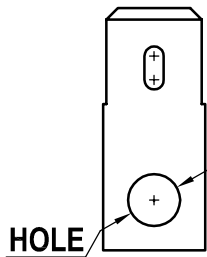


OPTION 7
90° - long

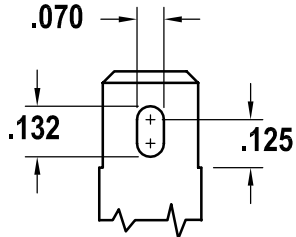


WITH BARREL - as shown

NO BARREL

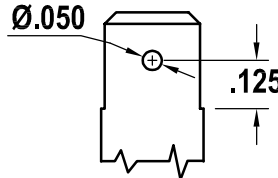


HOLE
Ø.135



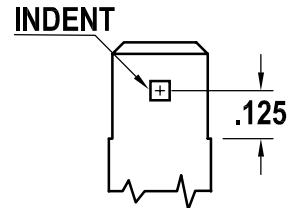
SPADE TYPE

A



SPADE TYPE

B



INDENT

C

SCALE: 2:1

PART NUMBER	MATERIAL BRASS	OPTION	SPADE TYPE	FORM	Length
1009	.018	1	A	Flat	
		2	B	Flat	
		3	A	90°	.343
		4	B	90°	.343
		5	A	45°	
		6	B	45°	
		7	A	90°	.406
		8	B	90°	.406

PART NUMBER	MATERIAL BRASS	OPTION	SPADE TYPE	FORM	Length
1146	.032	1	A	Flat	
		2	B	Flat	
		3	A	90°	.343
		4	B	90°	.343
		5	A	45°	
		6	B	45°	
		7	A	90°	.406
		8	B	90°	.406
		9	C	Flat	
		10	C	15°	.406