

1006+1008+1000+
+1101+1102+1105

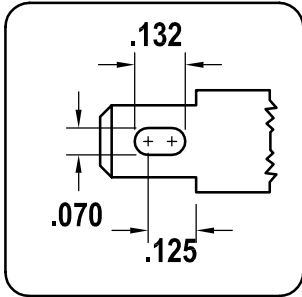


Terminal

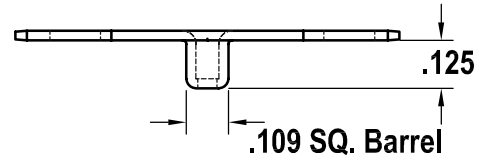
WITH BARREL - as shown

SPADE TYPE

(A)

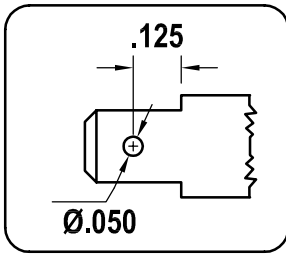


OPTION 1
Flat-Flat

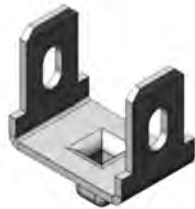
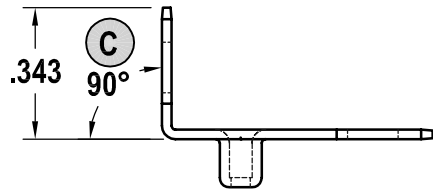


SPADE TYPE

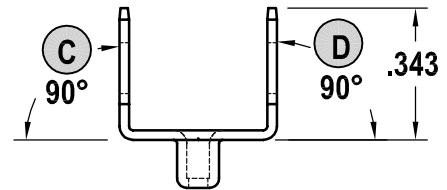
(B)



OPTION 3
90°-Flat

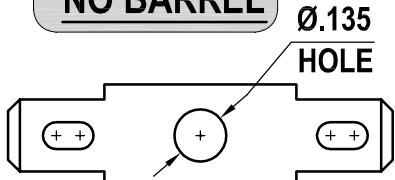


OPTION 5
90°-90°

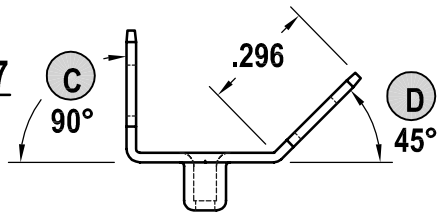


NO BARREL

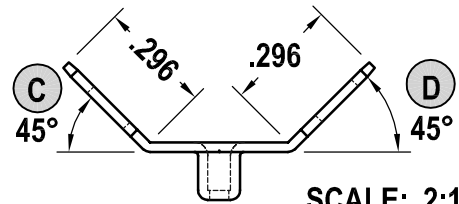
Ø.135
HOLE



OPTION 7
90°-45°



OPTION 9
45°-45°



SCALE: 2:1

PART NUMBER	MATERIAL BRASS	OPTION	SPADE 1	SPADE 2	C	D	E
1006	.018	1	A - A	Flat	Flat	.187	
		2	B - B	Flat	Flat	.187	
		3	A - A	90°	Flat	.187	
1101	.020	4	B - B	90°	Flat	.187	
		5	A - A	90°	90°	.187	
1102	.025	6	B - B	90°	90°	.187	
		7	A - A	90°	45°	.187	
1100	.032	8	B - B	90°	45°	.187	
		9	A - A	45°	45°	.187	
		10	B - B	45°	45°	.187	

PART NUMBER	MATERIAL BRASS	OPTION	SPADE 1	SPADE 2	C	D	E
1008	.018	1	A - A	Flat	Flat	.205	
		2	B - B	Flat	Flat	.205	
		3	A - A	90°	Flat	.205	
		4	B - B	90°	Flat	.205	
		5	A - A	90°	90°	.205	
1105	.020	6	B - B	90°	90°	.205	
		7	A - A	90°	45°	.205	
		8	B - B	90°	45°	.205	
		9	A - A	45°	45°	.205	
		10	B - B	45°	45°	.205	